



# Ci 9000ACE

## Information Sheet



The in-wall Ci Series 9000ACE from KEF is a innovative new advance into custom installed loudspeakers. The 165mm (6½") Uni-Q® driver array brings out the full emotional depth and texture of vocals, whether sung, shouted, spoken or whispered - hardly surprising, since it's exactly the same unit as you'll find on the XQ series. On either side, a matching pair of long throw bass drivers with ultra-low distortion motors for low frequency response that's as lucid as it is gutsy - and thanks to KEF's Acoustic Compliance

Enhancement technology, (ACE) what you actually hear is a level of bass extension that's normally only obtainable with much larger speakers.

Ci Series 9000ACE comes with two grille options: The pictured black cloth covered grille and a white overhanging grille. A grille for painting or covering is also available.

The new Ci Series 9000ACE.  
More range, more depth. More alive.

### Features and Benefits:

Purpose built for flush mounting into walls, the 3-way, Ci9000ACE combines 150W power handling and 88dB sensitivity. A 165mm (6½") polypropylene cone midrange unit with a coincident mounted, twin neodymium magnet, 19mm (¾") aluminium dome, high-frequency unit and two 165mm (6½") bass drivers in a sealed back-box.

HF output can be increased through alternative terminal connection to compensate for grille coverings.

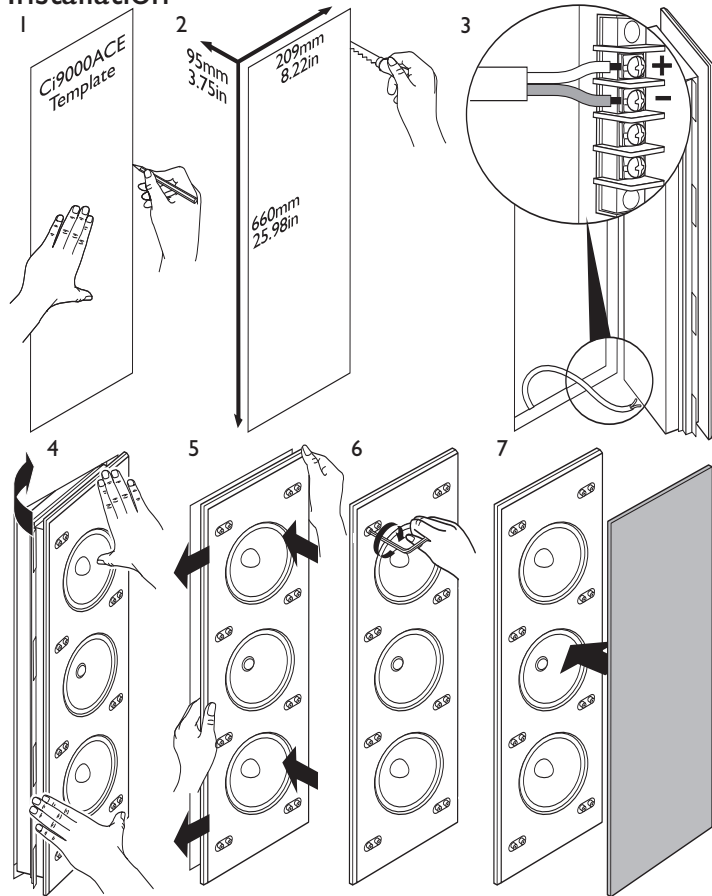
**Ci series**  
custom installation speakers

**ace**  
acoustic compliance enhancement

**KEF®**

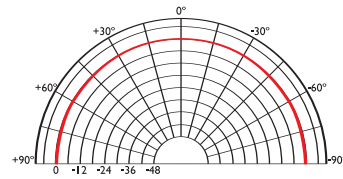
# Ci9000ACE

## Installation

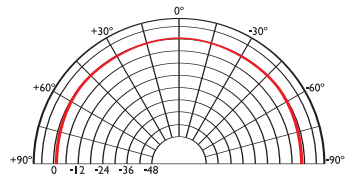


## Polar graphs

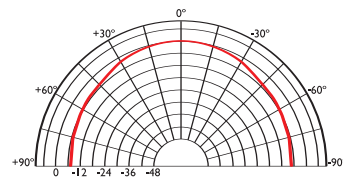
500Hz



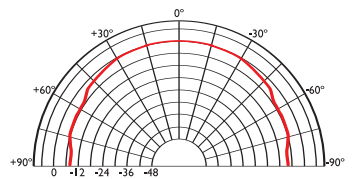
1kHz



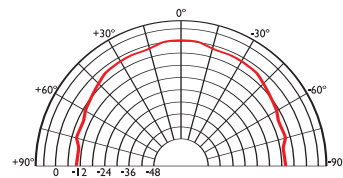
2kHz



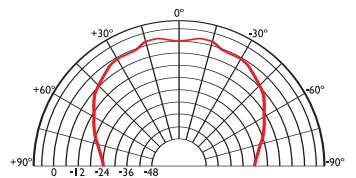
4kHz



8kHz



16kHz



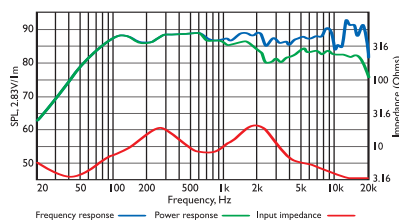
## Architectural specifications:

The Ci9000ACE comprises a Uni-Q® array with a coincident mounted, twin neodymium magnet, 19mm (¾") aluminium dome, high-frequency unit, a 165mm polypropylene midrange unit and two 165mm bass drivers. Performance should meet or exceed the following criteria:

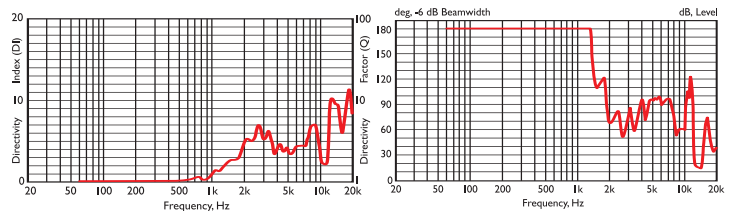
frequency response 1 metre on-axis with swept sinewave shall be 60Hz to 27kHz, sensitivity shall be at least 88dB for 2.83V@1m. The impedance and maximum power shall be 150W at 8 ohms. The Ci9000ACE is best suited for high quality music and home theatre applications where hi-fi performance is required, such as:

- Multi Room systems.
- Home Theatre systems.
- Lounges, Bars, Boutiques.
- Boardrooms & Offices.

## Frequency / Power response, Input impedance



## Directivity Index / Beamwidth



## Specifications

Frequency range	60Hz - 27kHz
Sensitivity (2.83v @ 1m)	88dB
Rec. amplifier power	30 - 150W
Nominal Impedance	8Ω (min. 3.2Ω)
Crossover Frequency	350Hz, 3kHz

Enclosure material	Steel
Terminals	screw type
Dimensions (H x W x D)	680 x 230 x 105 mm, 26.75 x 9.05 x 4.13 in.* 700 x 252 x 104 mm, 27.55 x 9.92 x 4.09 in.**
Net weight	12kg (26.4lbs)

\*With inset grille \*\*With overhanging grille